



YES We Scan!

PD-390A

Rugged Mobile Terminal



ANDROID

PD390A is a powerful tool integrating computing power thanks to the remarkable Marvell PXA910 806 Mhz CPU, the latest communication technology and the ability to read bar codes by the built in scanner.

Can be used as, PDA, GPS, Smartphone, a real pocket office to stay on line anywhere by the fast 802.11g WiFi, Bluetooth or by the Phone 4band GSM / WCDMA / GPRS / EDGE.

Very strong, industrial grade IP54 and resistant to 1.8 m. falls, provides long operating time by the 3100 mAh high capacity battery.

PD390A is certainly the most complete industrial PDA Smartphone at the moment, designed for professional and high-level business.

GSM **GPRS** **HSDPA** **GPS**

Bluetooth **WiFi** **USB**

Specifications

Physical

Depth: 28 mm
Width: 72 mm
Height: 147 mm
Weight: 250 g.

Electrical

Battery charger: 5 V, 1000 mAh, even from USB
Battery: 3.7 V 3100 mAh

Interfaces

USB, Bluetooth, WiFi 802.11 B/G, RS232
WCDMA / GSM / GPRS / EDGE 4 Band

Electronic

CPU: PXA 910 806 MHz
Memory: 1 GB (Exp)
Display: TFT 3.2" 240x320, Touch screen
Barcode reader: 1D (2D opz.)
Expansion: 1 x Micro SD slot (up to 16 GB)
Indicators: Led, speaker, vibrator
Keys: Numeric / Alpha / Function / Volume
GPS: Ublox AGPS

Operating

Operating system: ANDROID 2.3
WCDMA/GPRS/EDGE/HSDPA
Vibrator and Hand free supported
Barcode scanner 1D / 2D (optional)
Working time over 10 hours with a full charge

Accessories

Hand Strap
Protective case with belt clip
Spare Battery
Desktop cradle

Environmental

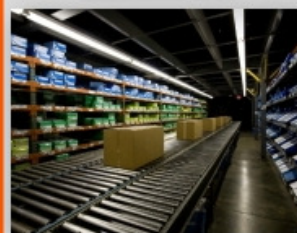
Protection: IP 54 splash proof
Operating temperature: -10° to 50°
Storage temperature: -20° to 70°
Humidity: 20% to 95% RH (non condensing)
Drop test: 1.8 mt



www.barcodeyes.com



Opzionale



Quality hardware for BARCODE

